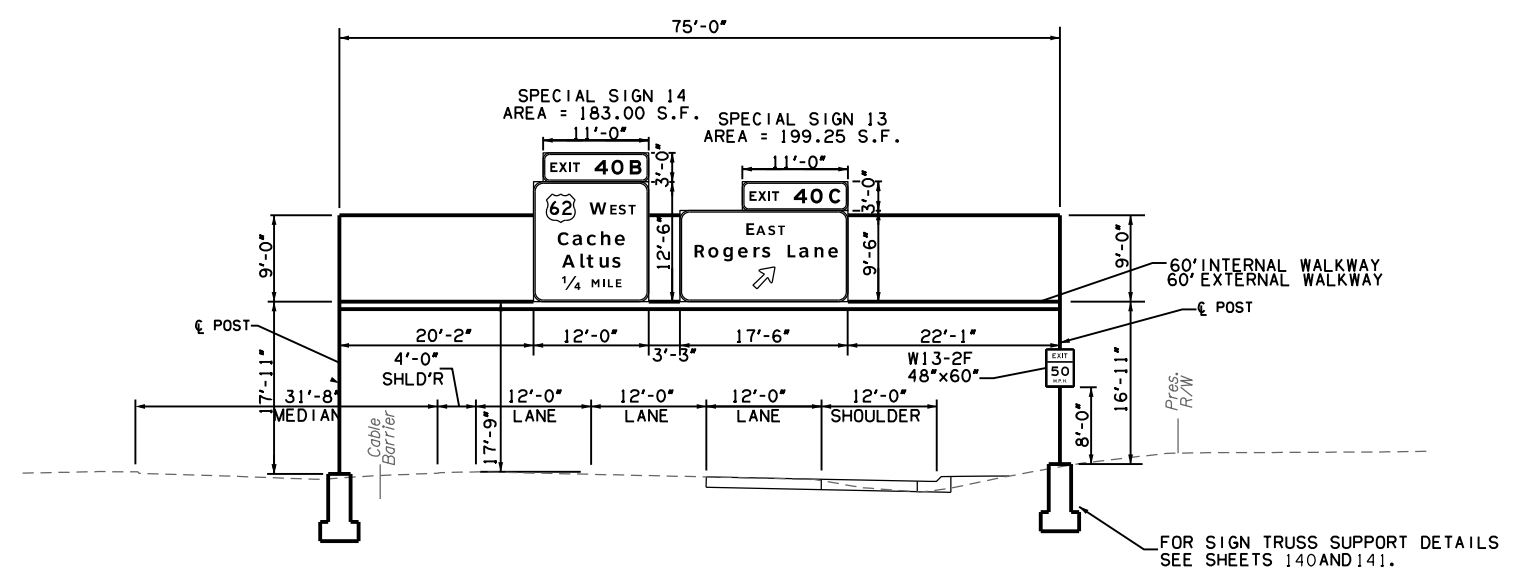


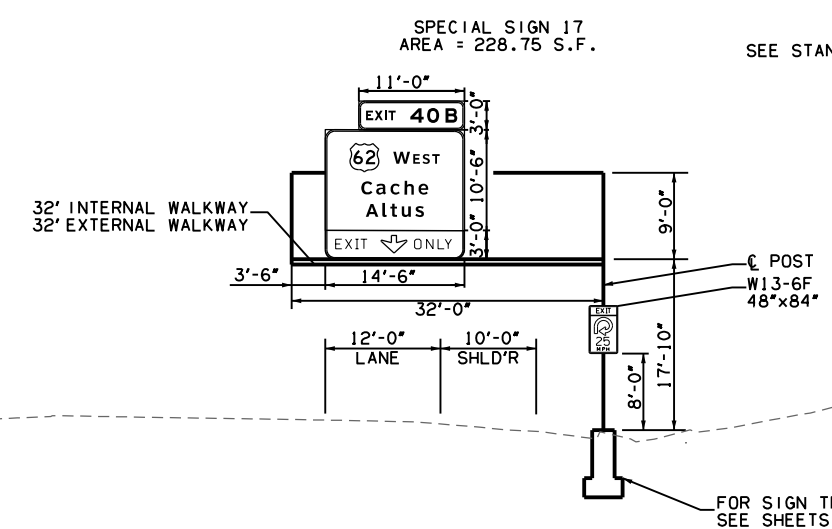
FED. ROAD DIST. NO.	STATE	JOB PIECE NO.	FISCAL YEAR	SHEET NO.	TOTAL SHEETS
6	OKLA.	27050(04)	2017		

DESCRIPTION	REVISIONS	DATE



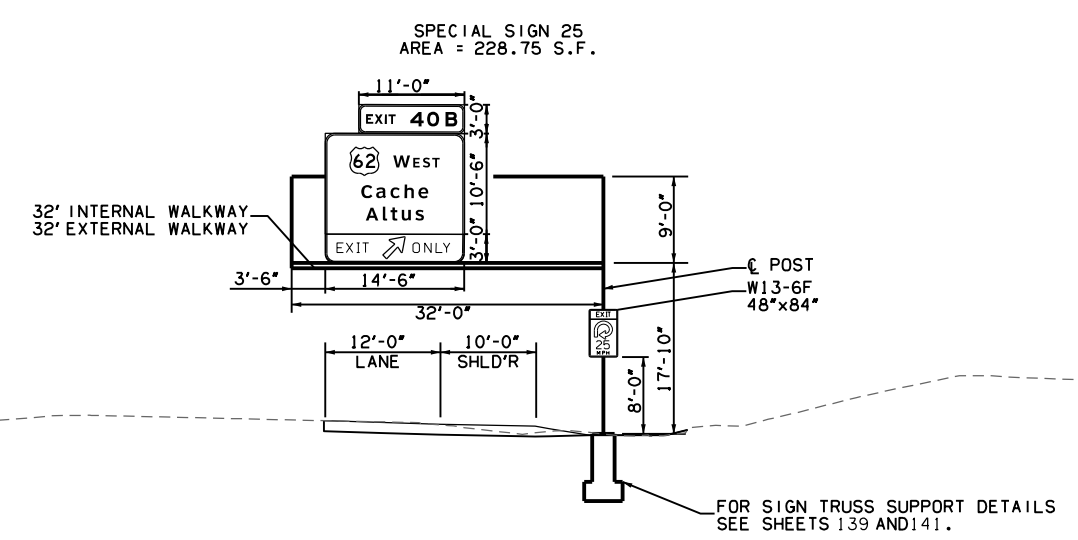
STRUCTURE NO. 1
RAMP F - STA. 77+50

SEE STANDARD OVERHEAD SIGN STRUCTURE "C-1" (GALVANIZED STEEL)



STRUCTURE NO. 2
RAMP C - STA. 52+00

SEE STANDARD OVERHEAD SIGN STRUCTURE "E-1" (GALVANIZED STEEL)



STRUCTURE NO. 3
RAMP D - STA. 59+00

SEE STANDARD OVERHEAD SIGN STRUCTURE "E-1" (GALVANIZED STEEL)

NOTES:
1. LENGTH OF ALL UPRIGHT SUPPORTS MAY VARY AND ARE FOR BIDDING PURPOSES ONLY. EXACT LENGTHS SHALL BE APPROVED BY THE ENGINEER PRIOR TO FABRICATION. MINIMUM VERTICAL CLEARANCE OVER ROADWAY SHALL BE 17'-9" OR AS DIRECTED BY THE ENGINEER.

DESIGN	CEM	7/13	I-44 & US-62 INTERCHANGE
DRAWN	CEM	7/13	
CHECKED	NDT	7/13	
APPROVED			
SQUAD	GARVER		

OVERHEAD SIGN STRUCTURES

STATE JOB NO. 27050(04) SHEET NO. 135